

# FOR LEASE

HOPEWELL CORPORATE CENTRE

2618 Hopewell Place NE Calgary



For more information, please contact :

**DALE COUPRIE**

*Senior Leasing Agent*

Cell : (403) 852 4448 Fax : (403) 228 4439

[dcouprie@bowriverleasing.com](mailto:dcouprie@bowriverleasing.com)

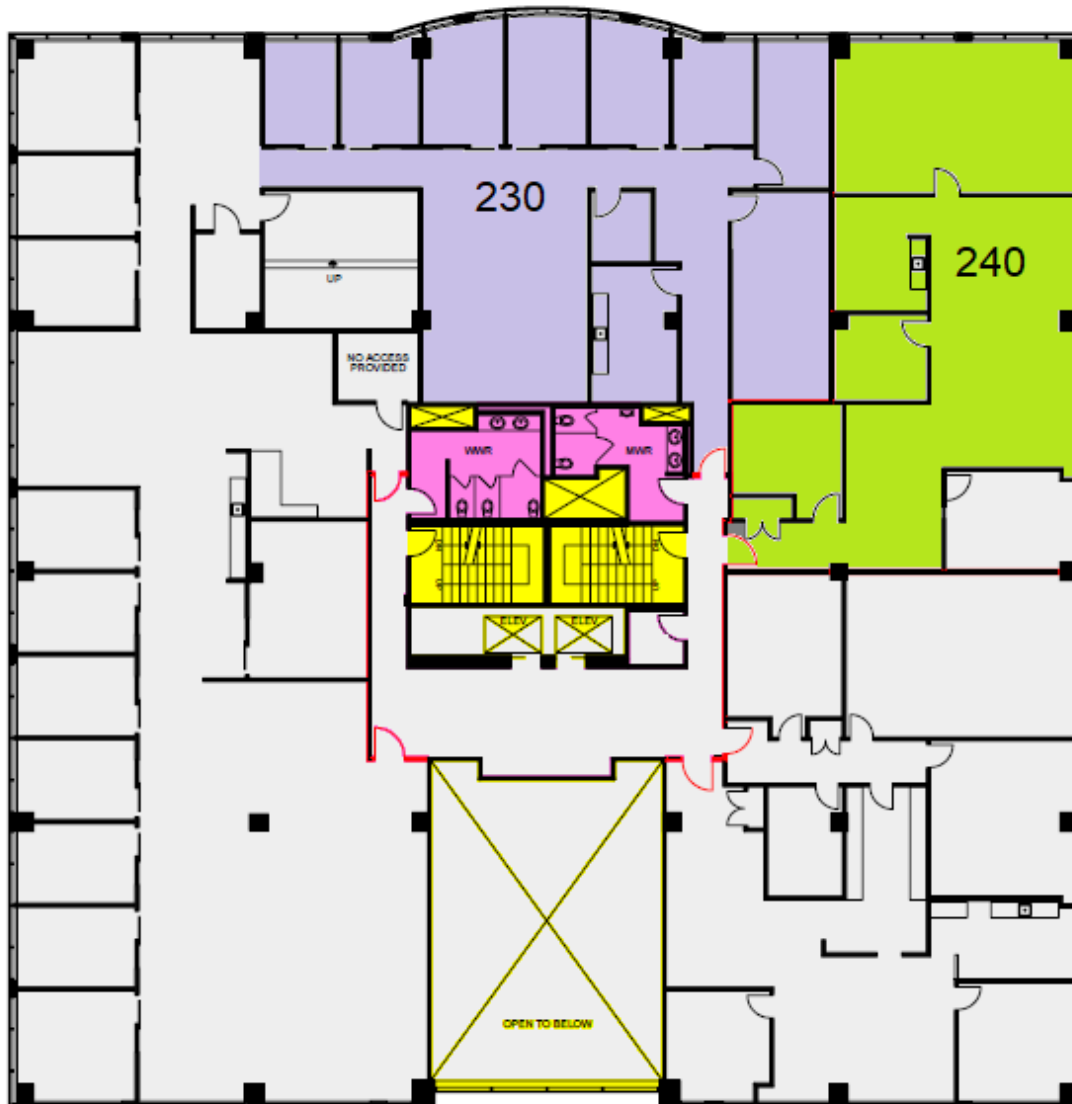
**BOW RIVER PROPERTY MANAGEMENT AND LEASING**

*B250 2210, 2nd Street, SW  
Calgary, AB. T2S 3C3*

<http://www.bowriverleasing.com>

# Floor 2

Hopewell Corporate Centre  
2618 Hopewell Place, NE



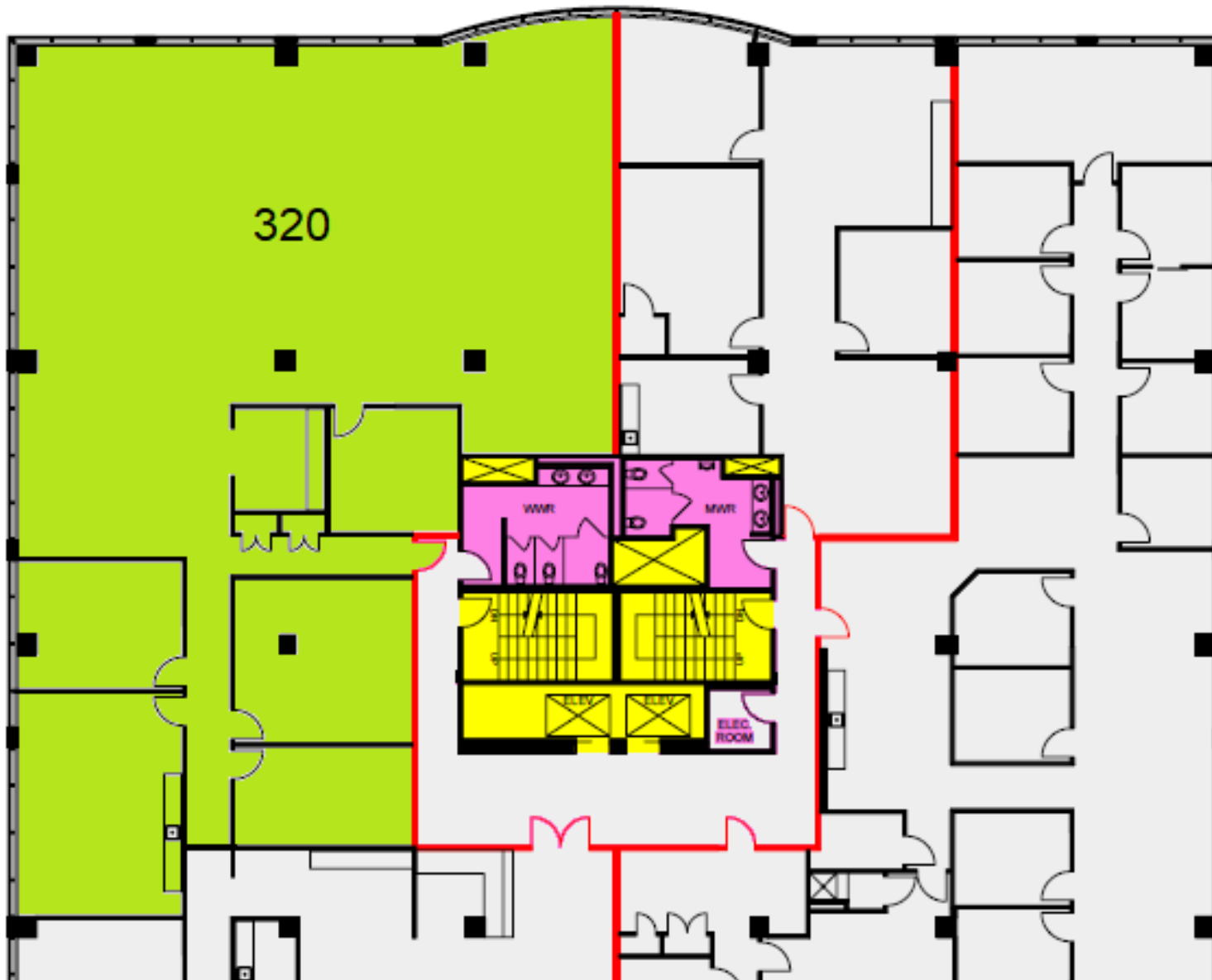
## HIGHLIGHTS

### Suite - 240

- \* This simple space is located right on a prime corner of the city with great views. Includes an open space, boardroom, kitchen and data area.
- \* 3 rooms
- \* view : Road
- \* Board room
- \* Storage
- \* Reception area
- \* Kitchen area
- \* Sink(s)
- \* Open space
- \* Server room
- \* Telephone hub
- \* Data hub
- \* 2098 sf

# Floor 3

Hopewell Corporate Centre  
2618 Hopewell Place, NE



## HIGHLIGHTS

### Suite - 320

- \* Great for a medium enterprise, this space offers lots of work space and a cooled server room.
- \* view : Road
- \* Storage
- \* Kitchen area
- \* Open space
- \* Server room
- \* Telephone hub
- \* Data hub
- \* 5200 sf

# Floor 5

Hopewell Corporate Centre  
2618 Hopewell Place, NE

14,840 SF

## HIGHLIGHTS

### Suite - 500

- \* Take your enterprise to a new level with this amazing floor. Features full smart security, server room, and a wide array of views including downtown, the airport and more.
- \* view : Road
- \* Board room
- \* Reception area
- \* Ensuite washroom(s)
- \* Ensuite shower room(s)
- \* Server room
- \* Furniture available
- \* 14840 sf

