

# FOR LEASE

## Asia Pacific Centre

100 Fourth Avenue SW Calgary



For more information, please contact :

### DALE COUPRIE

Senior Leasing Agent

Cell : (403) 852 4448 Fax : (403) 228 4439

[dcouprie@bowriverleasing.com](mailto:dcouprie@bowriverleasing.com)

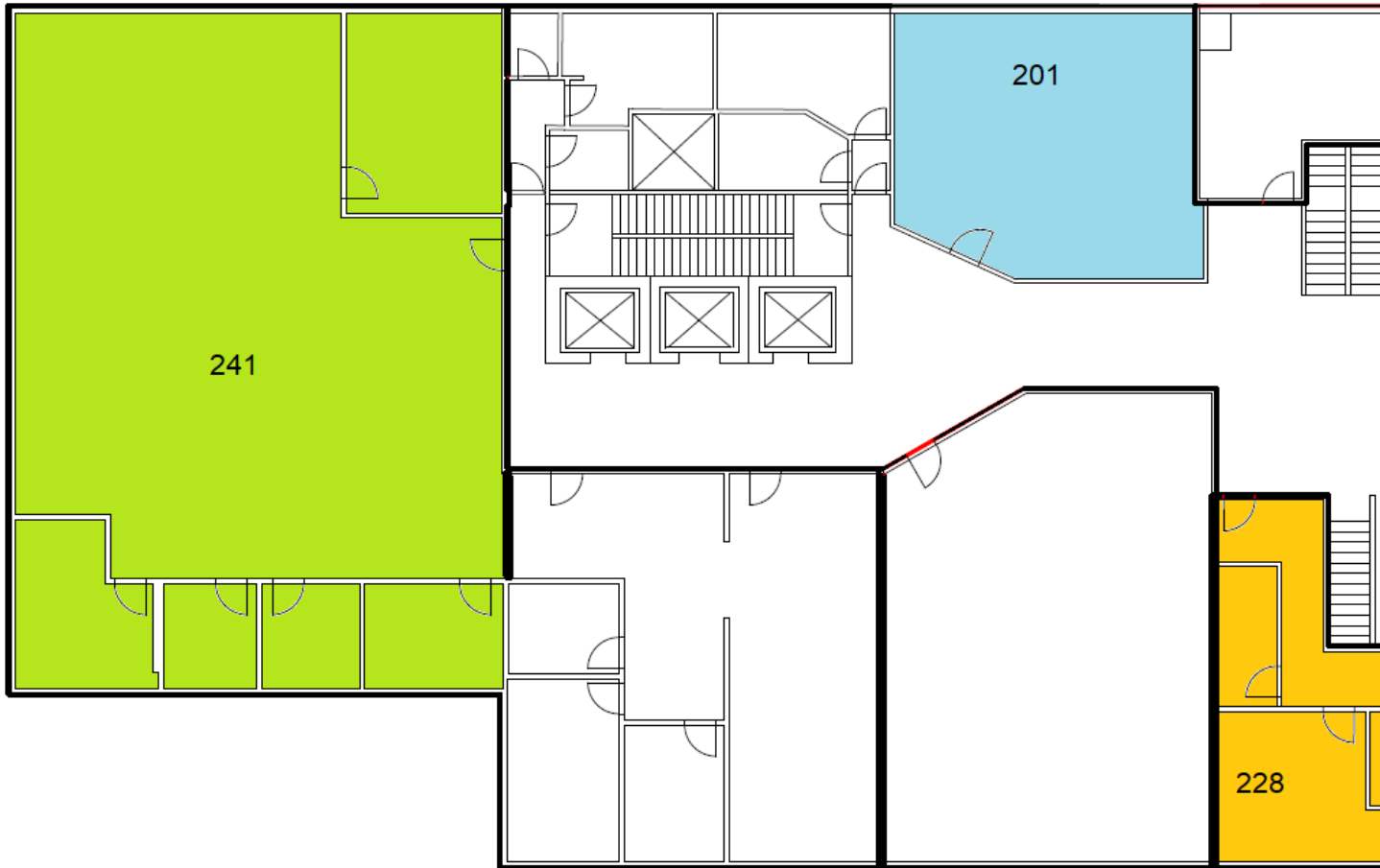
### BOW RIVER PROPERTY MANAGEMENT AND LEASING

B250 2210, 2nd Street, SW  
Calgary, AB. T2S 3C3

<http://www.bowriverleasing.com>

# Floor 2

Asia Pacific Center  
100 4 Avenue SW



## HIGHLIGHTS

### Suite - 201

- \* 1000 sf

### Suite - 228

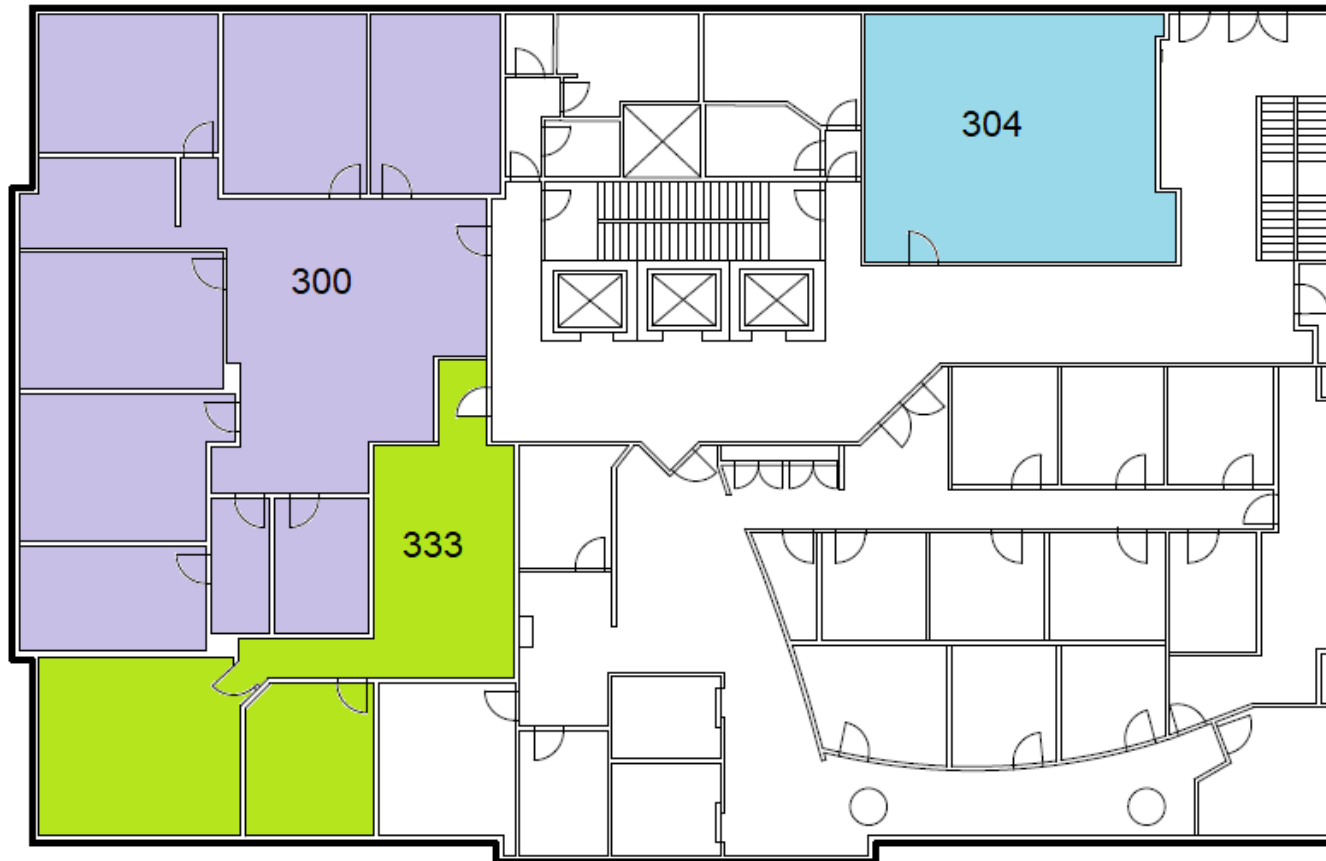
- \* A small retail or office within easy view of Plus-15 traffic.
- \* 2 rooms
- \* view : Downtown
- \* 629 sf

### Suite - 241

- \* 6 rooms
- \* view : Downtown
- \* 3885 sf

# Floor 3

Asia Pacific Center  
100 4 Avenue SW



## HIGHLIGHTS

### Suite - 300

- \* 10 rooms
- \* view : Downtown
- \* 4437 sf

### Suite - 333

- \* 3 rooms
- \* view : Downtown
- \* 1331 sf

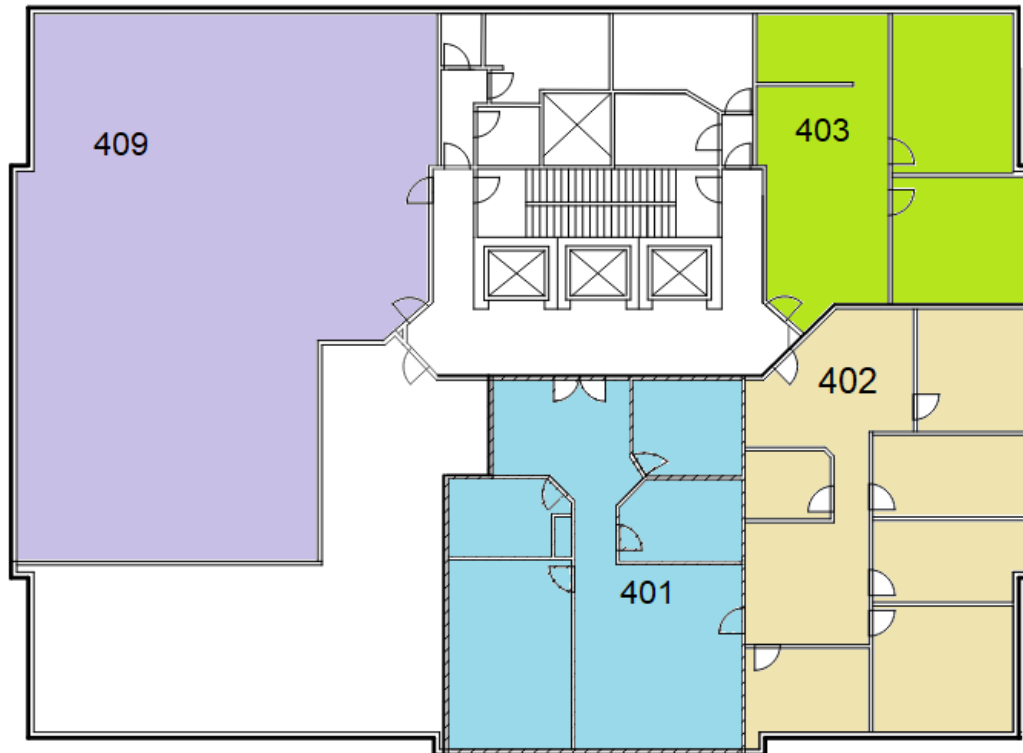
### Suite - 304

- \* 940 sf



# Floor 4

Asia Pacific Center  
100 4 Avenue SW



## HIGHLIGHTS

### Suite - 401

\* 3213 sf

### Suite - 403

\* 4 rooms

\* 1390 sf

### Suite - 409

\* 10 rooms

\* view : Road

\* 3519 sf

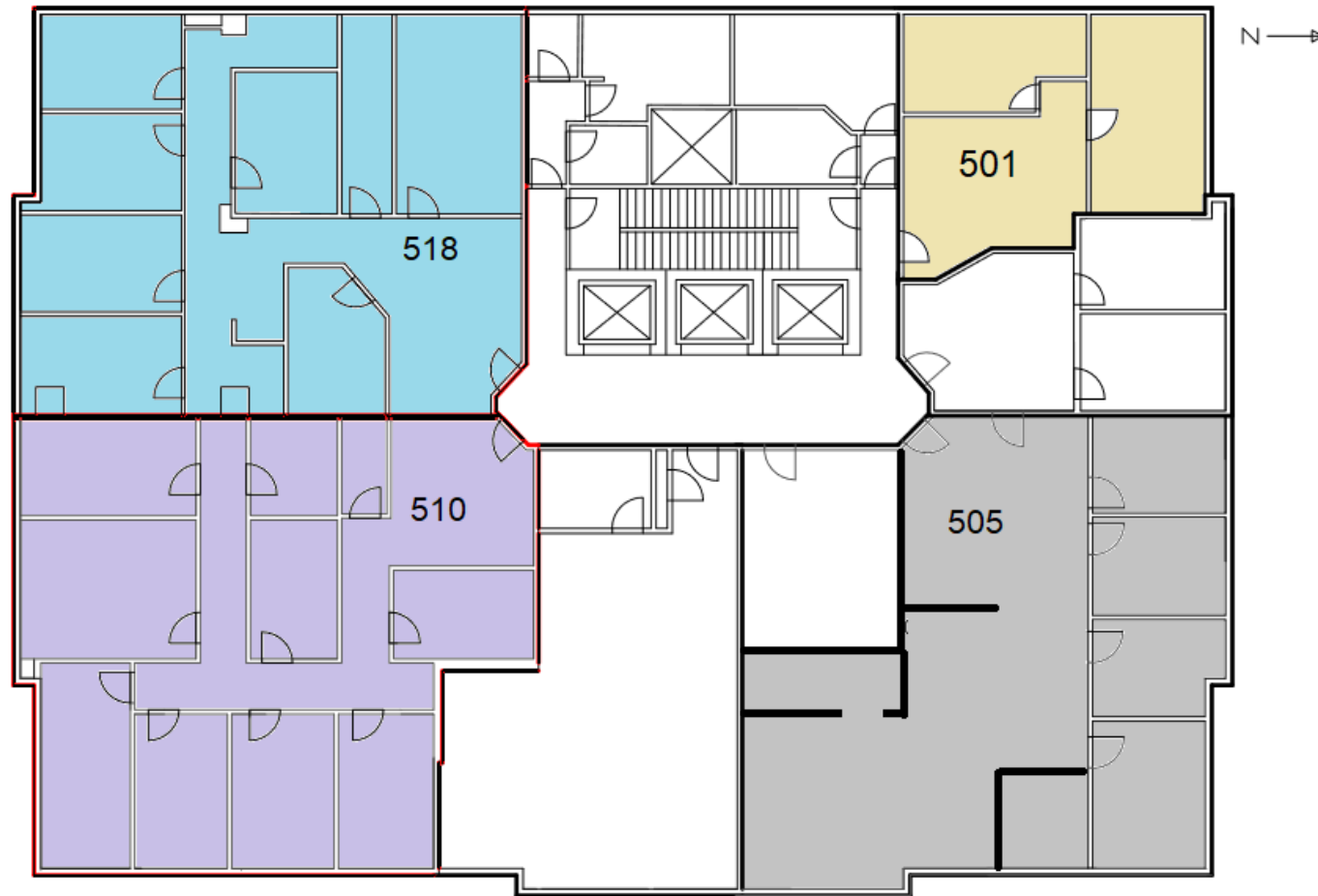
### Suite - 402

\* 7 rooms

\* 1825 sf

# Floor 5

Asia Pacific Center  
100 4 Avenue SW



## HIGHLIGHTS

### Suite - 501

- \* 3 rooms
- \* 875 sf

### Suite - 505

- \* 2626 sf

### Suite - 510

- \* 9 rooms
- \* 2533 sf

### Suite - 518

- \* Board room
- \* Storage
- \* Reception area
- \* Kitchen area
- \* Sink(s)
- \* Server room
- \* Telephone hub
- \* Data hub
- \* Furniture available
- \* 2473 sf

# Floor 6

Asia Pacific Center  
100 4 Avenue SW



## HIGHLIGHTS

### Suite - 600

- \* 11 rooms
- \* Board room
- \* Storage
- \* Reception area
- \* Kitchen area
- \* Sink(s)
- \* Open space
- \* Server room
- \* Telephone hub
- \* Data hub
- \* 4832 sf

### Suite - 601

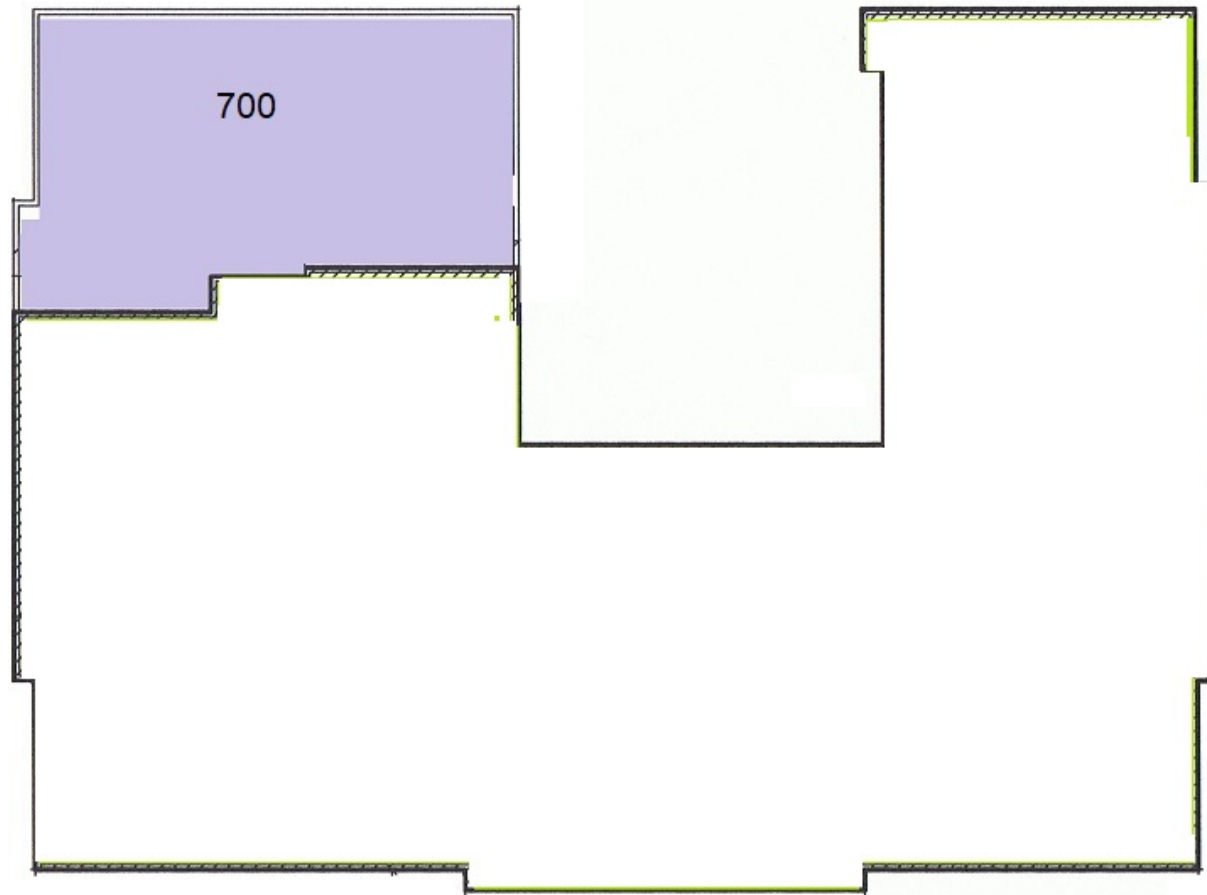
- \* 13 rooms
- \* Board room
- \* Reception area
- \* Kitchen area
- \* Sink(s)
- \* Server room
- \* Data hub
- \* 3431 sf

### Suite - 603

- \* 8 rooms
- \* Board room
- \* Storage
- \* Reception area
- \* Kitchen area
- \* Sink(s)
- \* Data hub
- \* 2209 sf

# Floor 7

Asia Pacific Center  
100 4 Avenue SW



## HIGHLIGHTS

### Suite - 700

- \* This wonderful space features hardwood floors, an open office area, an office, storage, and much more. Add about 100 square feet and get a shower and bike vestibule.
- \* 4 rooms
- \* view : Downtown
- \* Storage
- \* Server room
- \* Data hub
- \* 1578 sf

# Floor 9

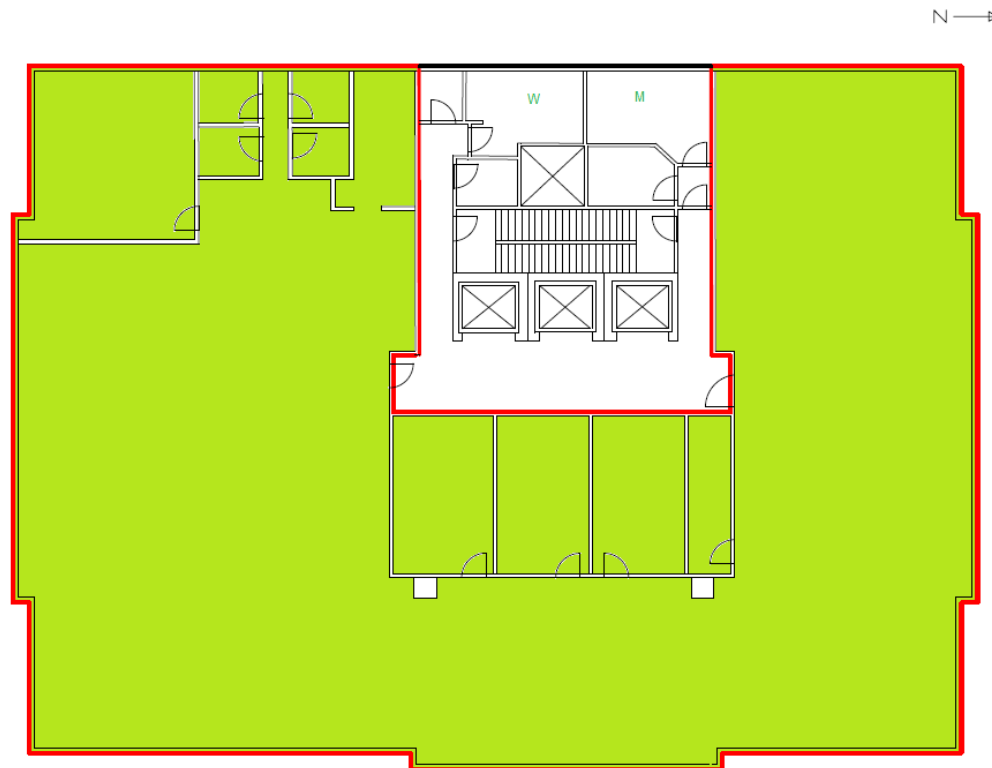
Asia Pacific Center  
100 4 Avenue SW

10,285 SF

## HIGHLIGHTS

### Suite - 900

- \* Take your business to the next level with this open space. It comes equipped with a boardroom, several breakout rooms, and up to 96 cubicles of workspace.
- \* The space also includes a boardroom and four individual breakout rooms.
- \* The server rooms are equipped with dedicated air conditioning.
- \* Available concurrently with 10th floor for approximately 20,600 square feet.
- \* Furniture is available including cubicles, file cabinets and boardroom tables.
- \* 10 rooms
- \* view : Downtown
- \* Board room
- \* Ensuite shower room(s)
- \* Sink(s)
- \* Server room
- \* Telephone hub
- \* Data hub
- \* 10285 sf

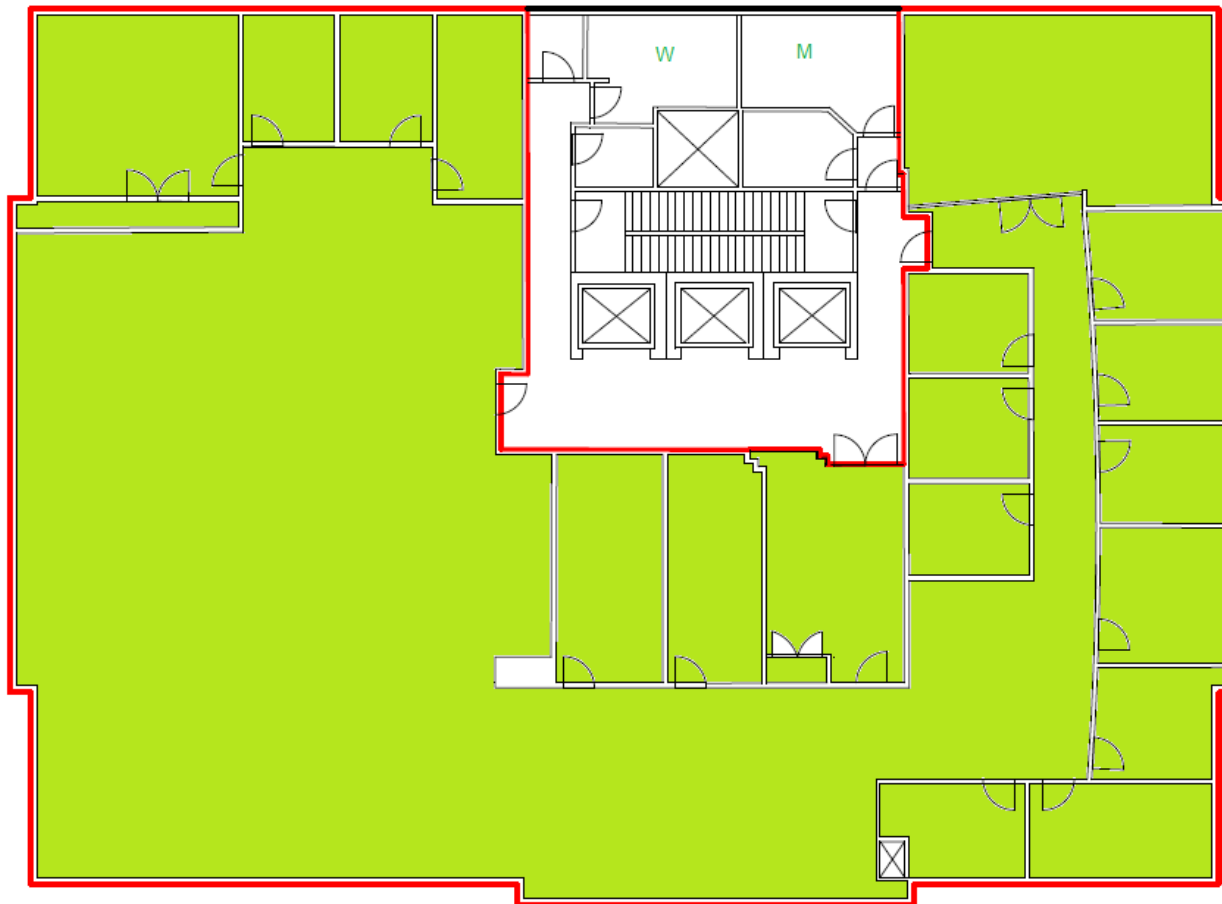




# Floor 10

Asia Pacific Center  
100 4 Avenue SW

10,285 SF



## HIGHLIGHTS

### Suite - 1000

- \* Take your business to the next level with this floor layout. The space includes 10 offices and cubicle space for approximately 48 workers. The reception area includes a glass door entrance.
- \* Secure your work with the existing Lenel card access system or choose to integrate with the existing building system.
- \* The server room includes infrastructure to install a water-based cooling solution.
- \* Telephones and a telephone switch are available.
- \* The north offices include a partial river view and a view of the Center Street Bridge.
- \* This space is available concurrently with the 9th floor for 20,600 square feet.
- \* 17 rooms
- \* view : Downtown
- \* Board room
- \* Storage
- \* Reception area
- \* Kitchen area
- \* Sink(s)
- \* Open space
- \* Server room
- \* Telephone hub
- \* Data hub
- \* Furniture available
- \* 10251 sf