

FOR LEASE

HOPEWELL CORPORATE CENTRE

2618 Hopewell Place NE Calgary



For more information, please contact :

DALE COUPRIE

Senior Leasing Agent

Cell : (403) 852 4448 Fax : (403) 228 4439

dcouprie@bowriverleasing.com

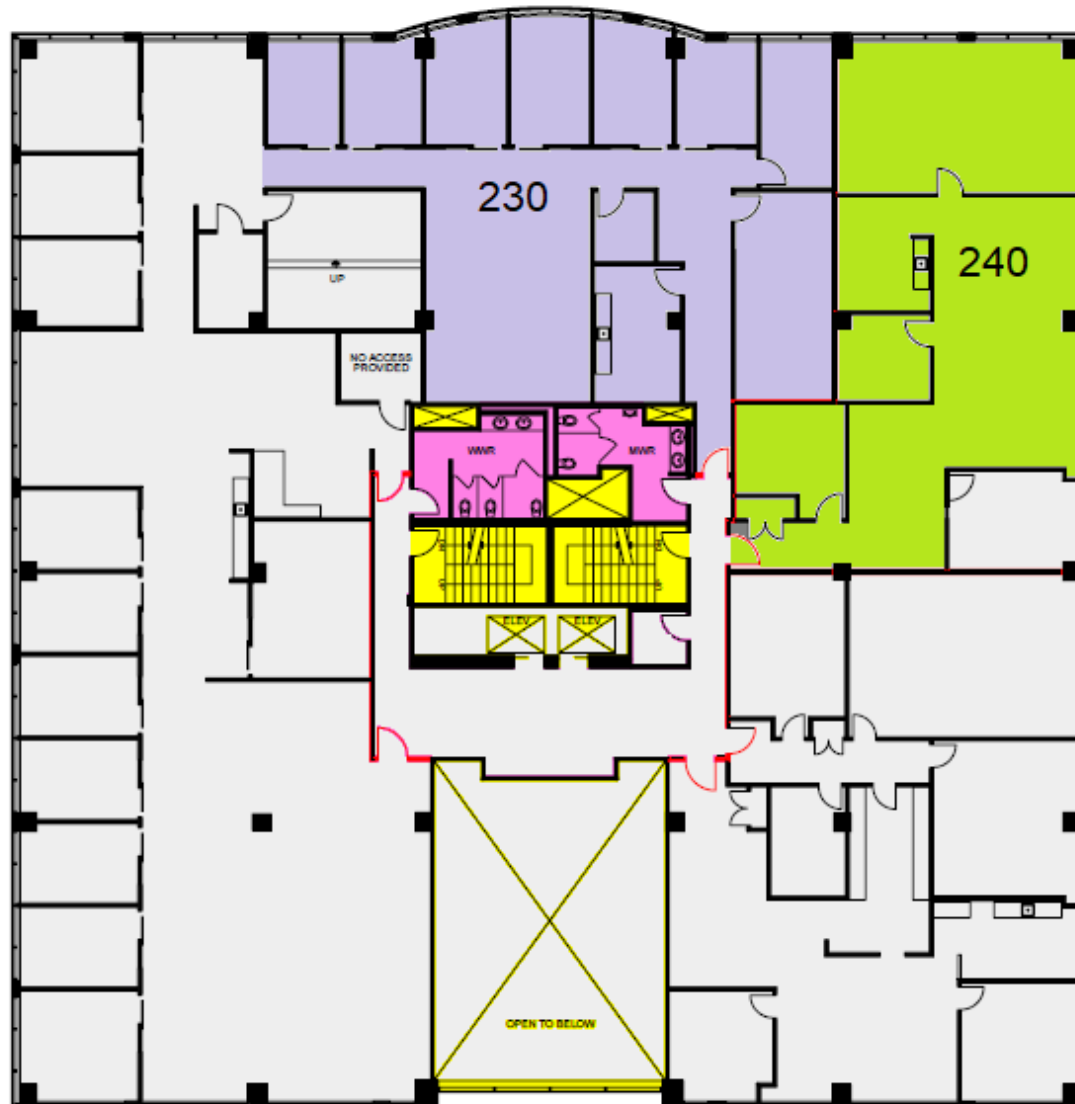
BOW RIVER PROPERTY MANAGEMENT AND LEASING

*B250 2210, 2nd Street, SW
Calgary, AB. T2S 3C3*

<http://www.bowriverleasing.com>

Floor 2

Hopewell Corporate Centre
2618 Hopewell Place, NE



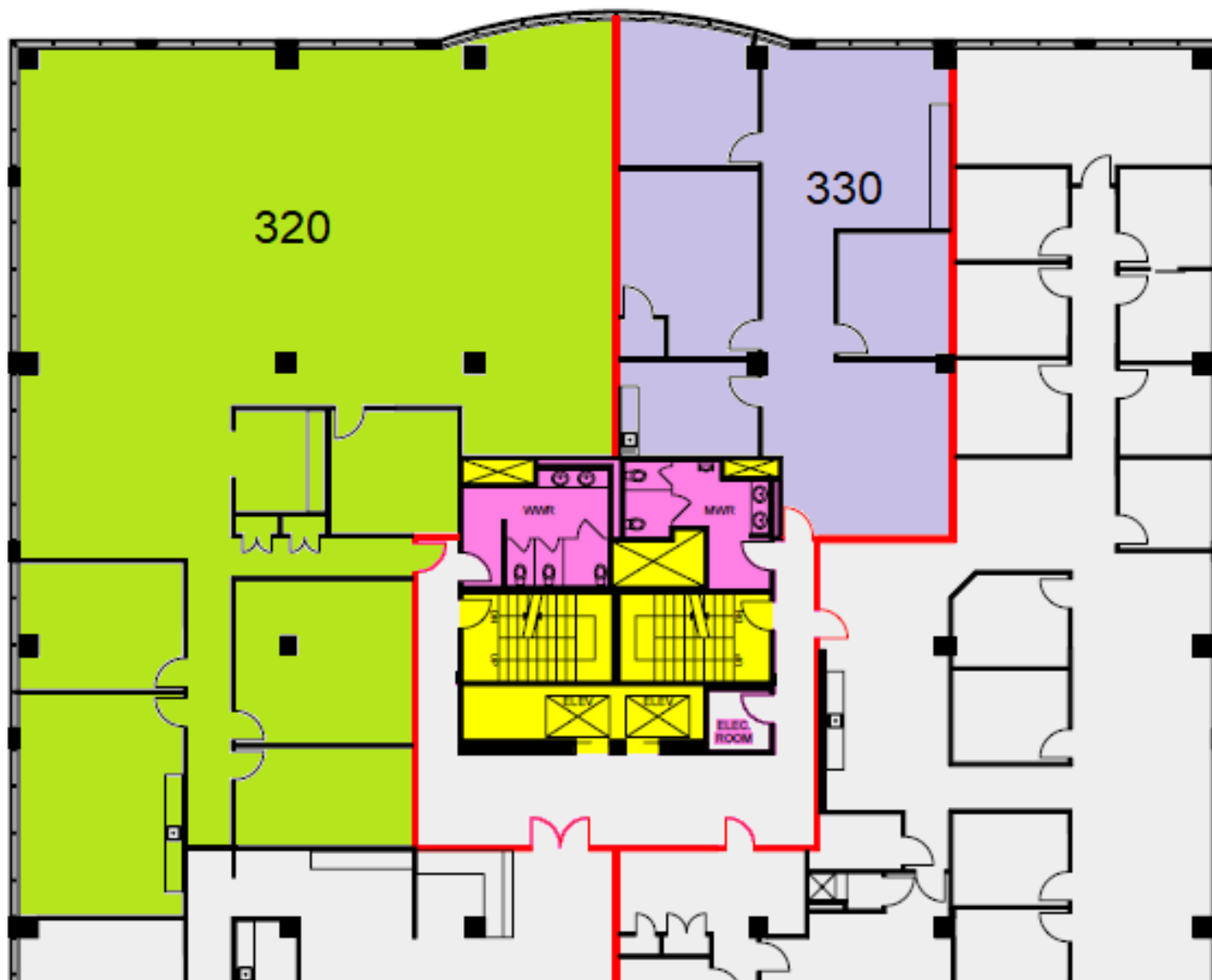
HIGHLIGHTS

Suite - 240

- * This simple space is located right on a prime corner of the city with great views. Includes an open space, boardroom, kitchen and data area.
- * 3 rooms
- * view : Road
- * Board room
- * Storage
- * Reception area
- * Kitchen area
- * Sink(s)
- * Open space
- * Server room
- * Telephone hub
- * Data hub
- * 2098 sf

Floor 3

Hopewell Corporate Centre
2618 Hopewell Place, NE



HIGHLIGHTS

Suite - 320

- * Great for a medium enterprise, this space offers lots of work space and a cooled server room.
- * view : Road
- * Storage
- * Kitchen area
- * Open space
- * Server room
- * Telephone hub
- * Data hub
- * 2098 sf

Suite - 330

- * Quietly positioned, but a great view will bless you in this small office configuration. Includes data and telecom infrastructure, well-positioned glass to take advantage of the natural light, kitchen area and more.
- * 5 rooms
- * view : Road
- * Reception area
- * Kitchen area
- * Sink(s)
- * Server room
- * Telephone hub
- * Data hub
- * 1952 sf