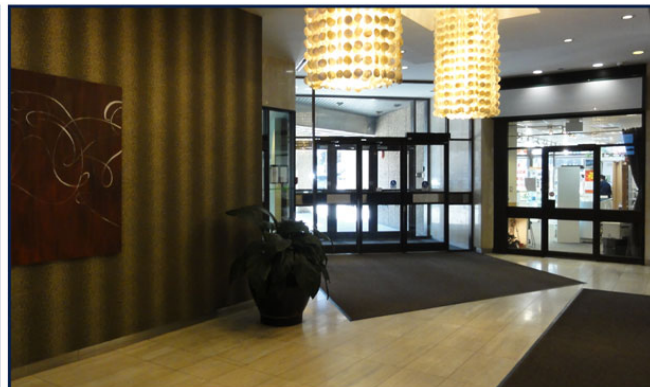


FOR LEASE

ASIA PACIFIC CENTRE OFFICE LEASING OPPORTUNITY



Bow River
Leasing



PROPERTY FACTS

ADDRESS	100 4th Street SW
MARKET	Calgary, Alberta
TOTAL BUILDING SIZE	87,687 SF
NUMBER OF FLOORS	10
PARKING	Underground and street

For more information, please contact :

DALE COUPRIE

Senior Leasing Agent

Cell : (403) 852 4448 Fax : (403) 228 4439

dcouprie@bowriverleasing.com

BOW RIVER PROPERTY MANAGEMENT AND LEASING

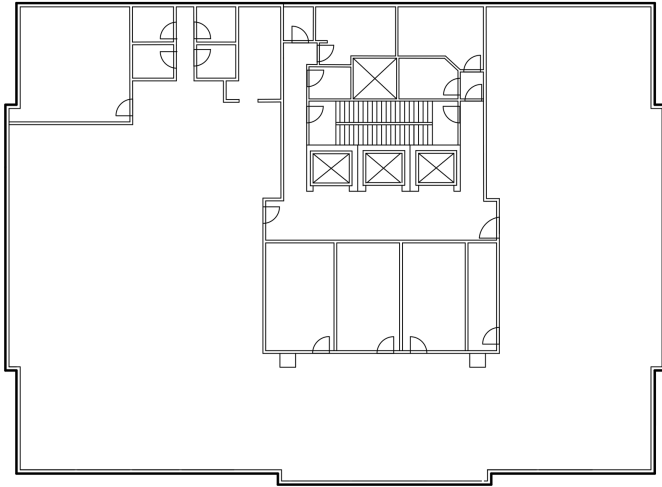
B250 2210, 2nd Street, SW
Calgary, AB. T2S 3C3

<http://www.bowriverleasing.com>

900

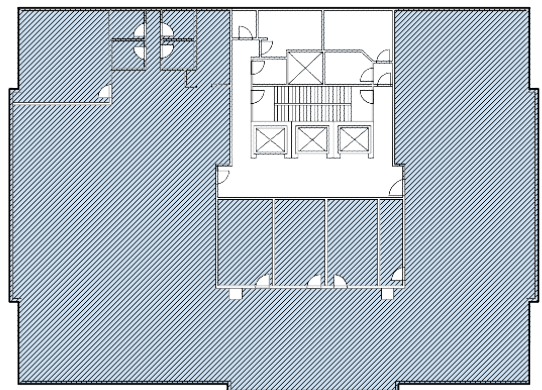
100 4 Avenue SW, Calgary AB

FOR LEASE
ASIA PACIFIC CENTRE
OFFICE LEASING OPPORTUNITY



SUITE COMMENTS

- * Take your business to the next level with this open space. It comes equipped with a boardroom, several breakout rooms, and up to 96 cubicles of workspace.
- * The space also includes a boardroom and four individual breakout rooms.
- * The server rooms are equipped with dedicated air conditioning.
- * Available concurrently with 10th floor for approximately 20,600 square feet.
- * Furniture is available including cubicles, file cabinets and boardroom tables.
- * 10 rooms
- * view : Downtown
- * Board room
- * Ensuite shower room(s)
- * Sink(s)
- * Server room
- * Telephone hub
- * Data hub
- * 10285 sf
- * 9 Floor



KEY PLAN

For more information, please contact :

DALE COUPRIE

Senior Leasing Agent

Cell : (403) 852 4448 Fax : (403) 228 4439

dcoupric@bowriverleasing.com

BOW RIVER PROPERTY MANAGEMENT AND LEASING

B250 2210, 2nd Street, SW

Calgary, AB. T2S 3C3

<http://www.bowriverleasing.com>