

# FOR LEASE

## ASIA PACIFIC CENTRE OFFICE LEASING OPPORTUNITY



### PROPERTY FACTS

ADDRESS	100 4th Street SW
MARKET	Calgary, Alberta
TOTAL BUILDING SIZE	87,687 SF
NUMBER OF FLOORS	10
PARKING	Underground and street

For more information, please contact :

#### DALE COUPRIE

Senior Leasing Agent

Cell : (403) 852 4448 Fax : (403) 228 4439

[dcouprie@bowriverleasing.com](mailto:dcouprie@bowriverleasing.com)

#### BOW RIVER PROPERTY MANAGEMENT AND LEASING

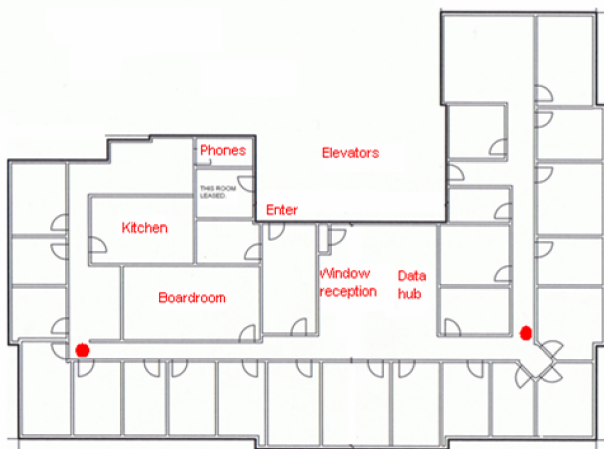
B250 2210, 2nd Street, SW  
Calgary, AB. T2S 3C3

<http://www.bowriverleasing.com>

701

100 4 Avenue SW, Calgary AB

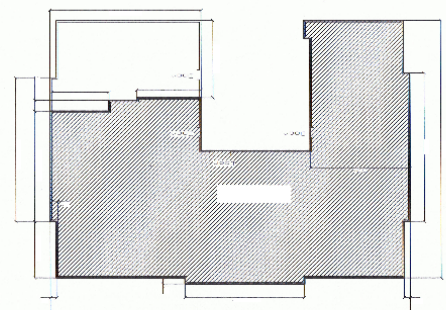
**FOR LEASE**  
ASIA PACIFIC CENTRE  
OFFICE LEASING OPPORTUNITY



● Fire alarm horn

### SUITE COMMENTS

- \* This is an office intensive configuration with a total of 23 offices. The place also features a boardroom, kitchen and a hybrid reception/hub area.
- \* The space has infrastructure and wiring for a tenant-installed security and access control system with smart key readers at each entrance.
- \* 27 rooms
- \* view : Downtown
- \* Board room
- \* Storage
- \* Reception area
- \* Kitchen area
- \* Sink(s)
- \* Server room
- \* Telephone hub
- \* Data hub
- \* Furniture available
- \* 8605 sf
- \* 7 Floor



KEY PLAN

For more information, please contact :

**DALE COUPRIE**

Senior Leasing Agent

Cell : (403) 852 4448 Fax : (403) 228 4439

[dcouprie@bowriverleasing.com](mailto:dcouprie@bowriverleasing.com)

BOW RIVER PROPERTY MANAGEMENT AND LEASING

B250 2210, 2nd Street, SW

Calgary, AB. T2S 3C3

<http://www.bowriverleasing.com>