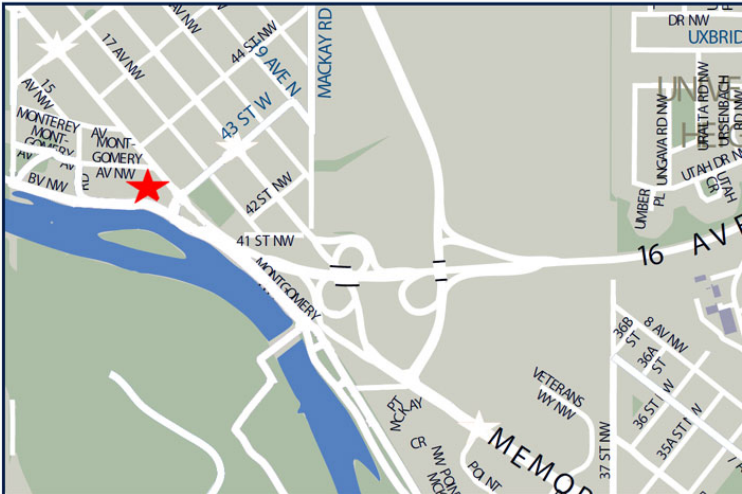


# FOR LEASE

## BOW RIVER PROFESSIONAL CENTRE OFFICE LEASING OPPORTUNITY



### PROPERTY FACTS

ADDRESS	4411 16th Avenue NW
MARKET	Calgary, Alberta
TOTAL BUILDING SIZE	32,071 SF
NUMBER OF FLOORS	3
PARKING	Underground and surface

For more information, please contact :

#### DALE COUPRIE

Senior Leasing Agent

Cell : (403) 852 4448 Fax : (403) 228 4439

[dcouprie@bowriverleasing.com](mailto:dcouprie@bowriverleasing.com)

#### BOW RIVER PROPERTY MANAGEMENT AND LEASING

B250 2210, 2nd Street, SW

Calgary, AB. T2S 3C3

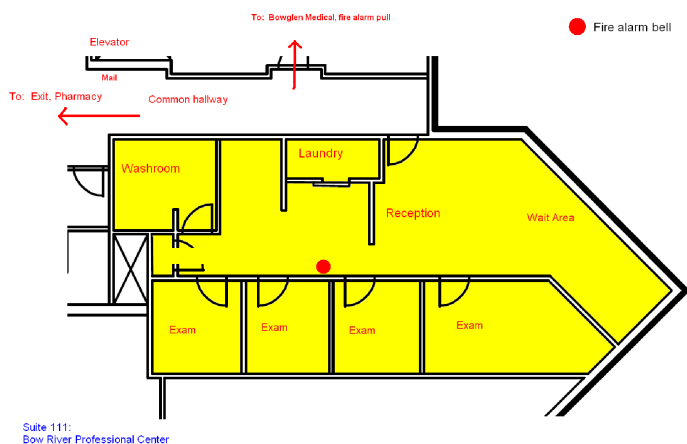
<http://www.bowriverleasing.com>

111

4411 16th Avenue NW, Calgary AB

**FOR LEASE**

**BOW RIVER PROFESSIONAL CENTRE  
OFFICE LEASING OPPORTUNITY**



### SUITE COMMENTS

- \* 6 rooms
- \* Storage
- \* Reception area
- \* Ensuite washroom(s)
- \* Kitchen area
- \* Sink(s)
- \* Data hub
- \* 1447 sf
- \* Main Floor

For more information, please contact :

**DALE COUPRIE**

*Senior Leasing Agent*

Cell : (403) 852 4448 Fax : (403) 228 4439

[dcouprie@bowriverleasing.com](mailto:dcouprie@bowriverleasing.com)

BOW RIVER PROPERTY MANAGEMENT AND LEASING

B250 2210, 2nd Street, SW  
Calgary, AB. T2S 3C3

<http://www.bowriverleasing.com>